



WEST EDITION  
Experimental Ruins

FIELD GUIDE

Tracing Ruins

Represented here are some visual traces of the physical experiences of those that took part in the Experimental Workshop, and the event Experimental Ruins, led by Office of Experiments in September and October 2012.

**Experimental Ruins: West Edition** was developed by Office of Experiments (OOE) and The Arts Catalyst, led by Neal White with critical support from Luce Choules, Roy Stephenson, Lisa Haskell and Lala Thorpe.

Commissioned by The Arts Catalyst and supported by Heritage Lottery Fund.

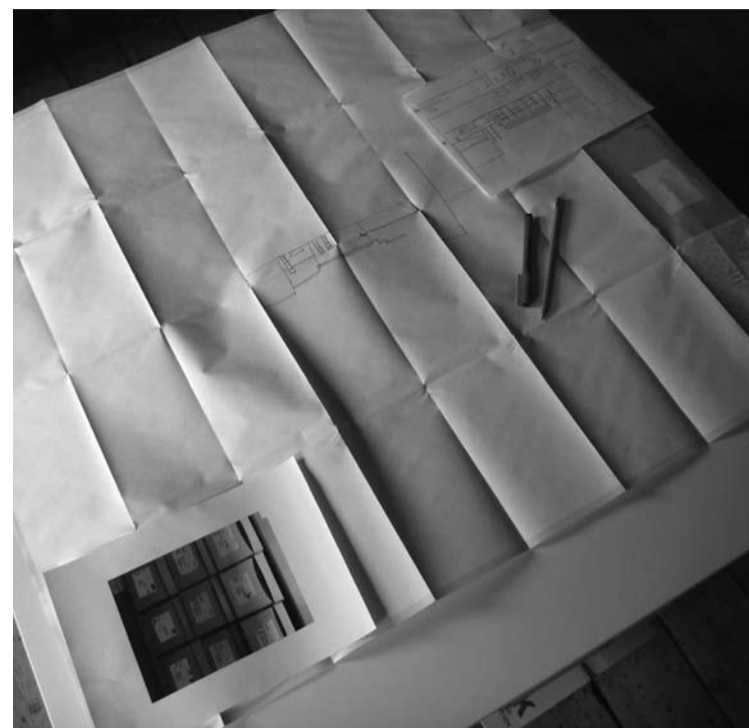
For more information see: [www.o-o-e.org](http://www.o-o-e.org) and [www.artscatalyst.org](http://www.artscatalyst.org)

ISBN 978-0-9568607-3-6



WITH THANKS TO SUBTERRANEA BRITANNICA AND THE RICK PRELINGER ARCHIVES

DESIGN [www.chaletalpin.com](http://www.chaletalpin.com)

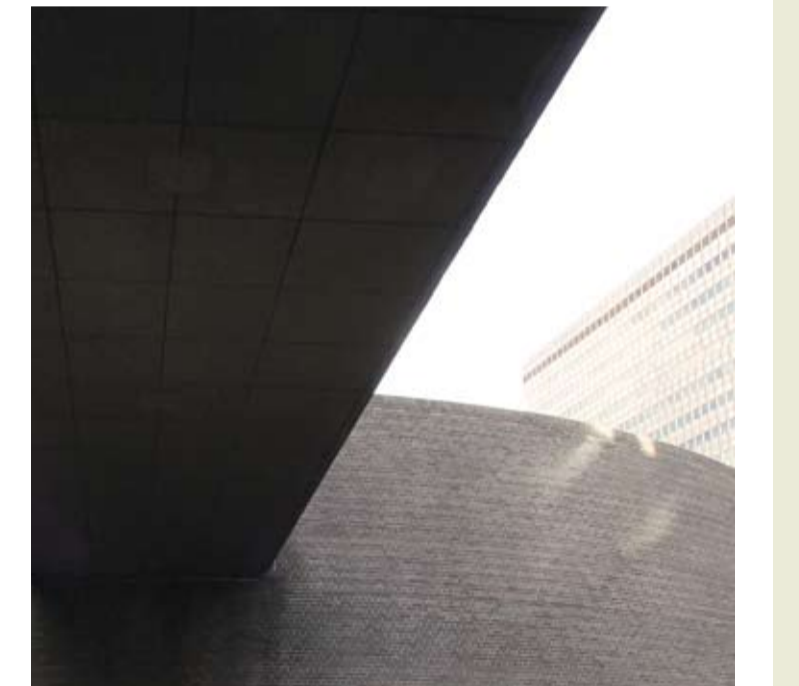


Part 1: Experimental Fieldwork

The twenty places of our Experimental Workshop were filled immediately. A sense of trepidation and unease extended through the group as we introduced concepts and ideas that lie behind experimental fieldwork and its subjects. Together we questioned our personal knowledge of urban and rural landscape, probing how we might respond to new sites that might in turn inform our own understanding of a recent cultural and political heritage.

From this initial discussion, two groups; Knowing and Not Knowing, were taken to the Ossuary at Museum of London. Led through a steel framed retail park scale catacomb by Dr. Roy Stephenson, this archive of death contains 17,000 exhumed skeletons from London excavations. In this smoke black brick building, the centre of a major roundabout in the heart of the City of London, a context was given through which volunteers might explore how best to approach experimental fieldwork.

Exploring in turn, the impact that an informational landscape makes to such experiences, with personal responses, individuals worked on ideas of how to interpret this institutional trespass; from digital recordings, to work with pinhole cameras, from situational interventions and personal mapping, a range of experimental approaches through which this landscape can be explored and represented were devised.



Part 2: Critical Excursion

A few weeks later, in the second part of this pilot project, **Experimental Ruins**, volunteers were joined by further untrained members of the public in a day-long tour through the transport and production infrastructure of military power and its temporary sites of resistance within the context of cold war landscape of West London's suburban fringes.

Framed by J.G. Ballard and the London Orbital, Known and Unknown Sites were revealed in a journey that led through underground cabinet war rooms, to sites of anti-nuclear weapons peace camps. Supplemented by material from media archives; from nuclear explosions, to footage of protest and occupation, the journey juxtaposed not only the geographical and historical representations of such sites, but how an understanding of interpretation through experimental fieldwork could shape our knowledge of our history in the future.

Provoking volunteers and the public alike, the experiment questions what we know and should understand about the nature and dimensions of our shared heritage.

Represented overleaf as a timeline through a topographic space, these are traces of actions, actors and activity that formed this experience.

The Ossuary, The Museum of London  
Fieldguide: Dr. Roy Stephenson  
Barbican, The City of London  
Latitude: 51.517496° Longitude: 0.096935°

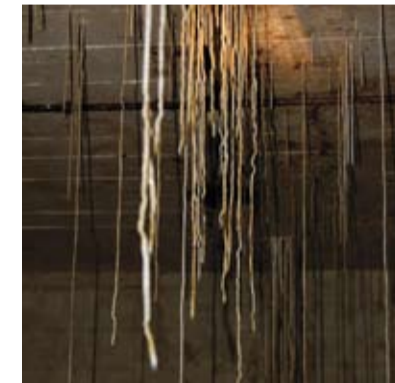
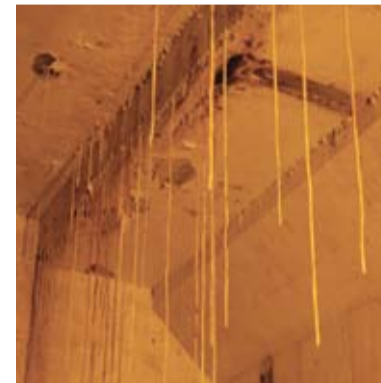
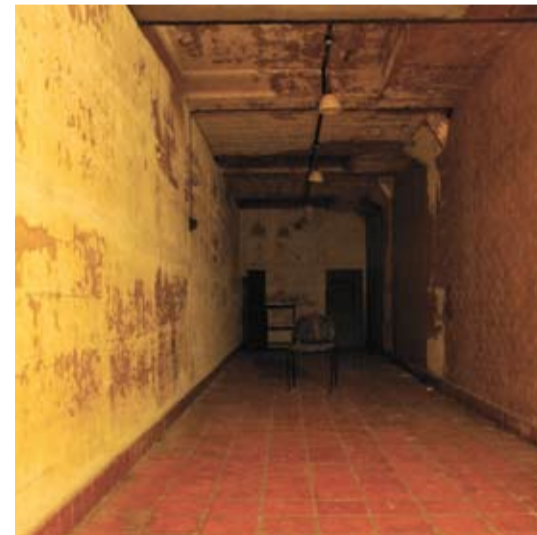
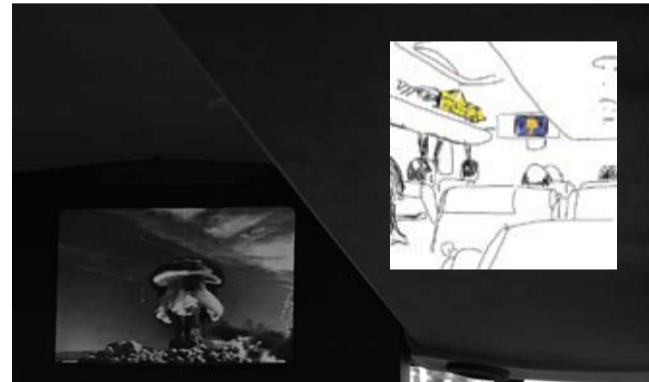
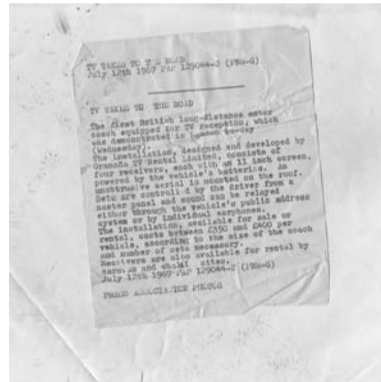


Site of Victory; Peace Protest Camp at Greenham Common Reading Area, Berkshire  
Latitude: 51.374060° Longitude: -1.283160°

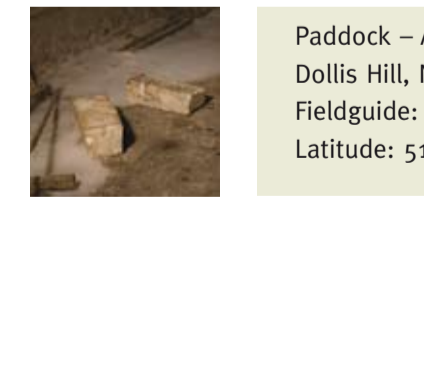
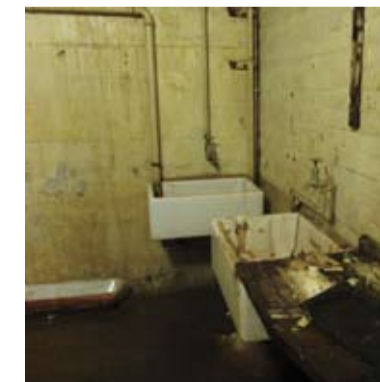


Overlook Site at AWE Burghfield. NukeWatch Reading Area, Berkshire  
Fieldguide: Anon NukeWatch volunteer  
Latitude: 51.407221° Longitude: -1.021120°

\* MONITORING PREPARATION AND MOVEMENT OF TRIDENT WARHEADS AND OTHER ACTIVITIES



Paddock – Abandoned Alternative Cabinet War Rooms  
Dollis Hill, North London  
Fieldguide: Subterranea Britannica volunteers  
Latitude: 51.563287° Longitude: -0.238228°



- SCHEDULE
- 09:30 Registration CLERKENWELL ROAD
  - 10:00 Depart EC1M
  - 10:45 Arrive THE PADDOCK
  - 12:45 Lunch NW2
  - 14:15 Arrive BURGHFIELD
  - 15:00 Arrive ALDERMASTON
  - 15:30 Pass AWE BLACKNEST
  - 15:45 Arrive GREENHAM COMMON
  - 16:30 Tea GREENHAM BUSINESS PARK
  - 17:15 Pass GEOSPATIAL INTELLIGENCE
  - 17:30 Refreshments CLERKENWELL ROAD